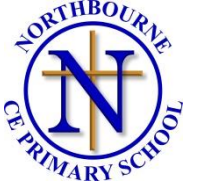




## Northbourne CEP School



### Blended Learning for Hazel Class 4<sup>th</sup> May – 7<sup>th</sup> May 2021

<b>Monday</b>	<b>Tuesday</b>	<b>Wednesday</b>	<b>Thursday</b>	<b>Friday</b>
Word of the day:	Word of the Day: gingerly	Word of the Day: cherish	Word of the Day: chaos	Word of the Day: snare
	<b>Maths</b>	<b>Maths</b>	<b>Maths</b>	<b>Maths</b>
	<u>WALT find the duration between times</u>	<u>WALT compare the duration</u>	<u>WALT find start and end times</u>	<u>WALT measure time</u>
	<a href="https://www.topmarks.co.uk/time/teaching-clock">https://www.topmarks.co.uk/time/teaching-clock</a>	<a href="https://www.topmarks.co.uk/time/teaching-clock">https://www.topmarks.co.uk/time/teaching-clock</a>	<a href="https://www.topmarks.co.uk/time/teaching-clock">https://www.topmarks.co.uk/time/teaching-clock</a>	<a href="https://www.topmarks.co.uk/time/teaching-clock">https://www.topmarks.co.uk/time/teaching-clock</a>
	Use teaching clock to aid learning	Use teaching clock to aid learning	Use teaching clock to aid learning	Use teaching clock to aid learning
	<a href="https://www.youtube.com/watch?v=e1l56frbqZE">https://www.youtube.com/watch?v=e1l56frbqZE</a>	<a href="https://kids.classroomsecrets.co.uk/resource/compare-durations-of-time-video-tutorial/">https://kids.classroomsecrets.co.uk/resource/compare-durations-of-time-video-tutorial/</a> Video lesson	Worksheet attached	Practical lesson – children can time (adult to use a stopwatch etc) different events throughout the day.
	Video that is useful to help children from techniques for finding the duration.	Worksheet attached		Ideas: Cleaning teeth Eating lunch Game of football Tidy room
	Worksheet attached			Children to record times on a table or grid.

	<p style="text-align: center;"><b>Topic</b></p> <p><u>WALT write a persuasive text</u></p> <p>Children to write their persuasive text using their plan from previous week. (Mr.Martin will send this via Purplemash)</p> <p>Focus on handwriting and layout of writing using the template attached.</p>	<p style="text-align: center;"><b>Topic</b></p> <p><u>WALT edit</u></p> <p>Use link below to help edit your writing.</p> <p>Focus on spelling, grammar and punctuation.</p> <p><a href="https://www.theschoolrun.com/editing-creative-writing">https://www.theschoolrun.com/editing-creative-writing</a></p> <p><a href="https://www.youtube.com/watch?v=I5nMxF4ufWg">https://www.youtube.com/watch?v=I5nMxF4ufWg</a></p>	<p style="text-align: center;"><b>Topic</b></p> <p><u>WALT neat write</u></p> <p>Children to use their edited news report to write a neat version.</p> <p>This could be done on a word document or Purplemash template.</p>	<p style="text-align: center;"><b>Topic</b></p> <p><u>WALT explore world biomes</u></p> <p>What do all plants need to survive?</p> <p>Children think of similarities and differences between two plants (images attached)</p> <p>Look at the world biomes map. Why do you think the colours have been chosen for the biomes?</p> <p>Use the biomes map and an atlas (book or online) to complete the quiz attached.</p>

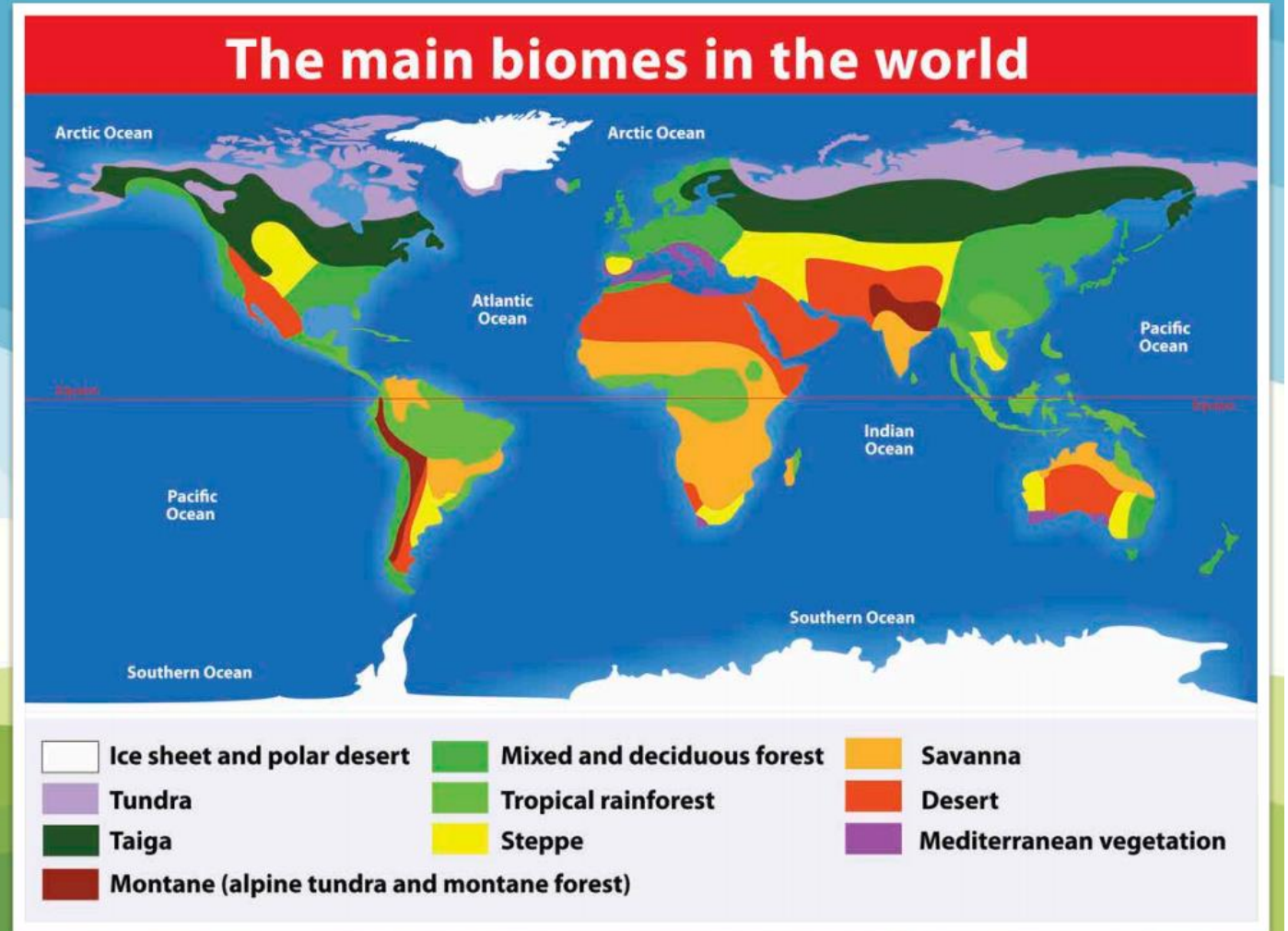
	<p>Science  <u>WALT Investigate plant growth</u></p> <p>Children to continue investigation of plants from previous week (Children can begin to grow seeds this week if they have not yet done this)</p> <p><u>Grow some seeds in different conditions:</u></p> <ul style="list-style-type: none"> <li>• Wet soil</li> <li>• Dry soil</li> <li>• Dark cupboard etc</li> </ul> <p>(if you do not have seeds children could predict what they think will happen.)</p>	<p>P.E</p> <p>Leading on from Friday's activity day children can pick an activity from the day to challenge everyone in their household.</p> <p>Children to think about what skill-based games they would include in their own sports day - create a plan, points system and timetable.</p>	<p>French</p> <p>Use language angels to practice counting up to 30.</p> <p>Children can begin looking at the date in French using knowledge of days of the week and numbers.</p>	<p>R.E</p> <p>A Hindu life, what is important?</p> <p>Watch the following clip on life and rebirth in Hinduism.</p> <p><a href="#">BBC Two - My Life, My Religion, Hinduism, The Cycle of Birth and Rebirth</a></p> <p>Children come up with a list of good deeds they believe will help a Hindu child receive good karma and help them in their rebirth.</p> <p>Discuss why each deed is important and how it can be achieved.</p>

Instructions for **Word of the Day**:

1. How many syllables are in the word?
2. What word class is it?
3. What does it mean? Use a dictionary to help you.
4. Think of a sentence using the word – say it out loud.
5. How can you improve your sentence? Can you add further description or information? Can you alter the word order to make it sound more interesting?
6. Write your best sentence down.
7. What prefixes and/or suffixes can you use with the word (if any)? How do they change the meaning?
8. Can you think of any synonyms or antonyms?
9. On Friday, write a paragraph using all the words of the day for this week.

For further information and guidance you can go to <https://vocabularyninja.co.uk/word-of-the-day/>

Plants and animals are all suited to different climates. A climate zone and the plants and animals that live within it make up a **biome**. Plants that live in different parts of the world might have similar characteristics if they live in the same biome.



Name: \_\_\_\_\_

Date: \_\_\_\_\_



Use the World Biomes Map and World Map (or an atlas) to answer these questions!

Canada, North America has a **savannah** biome.

TRUE

FALSE

Australia has **six** of the main biomes of the world.

TRUE

FALSE

India has a **tropical rainforest** biome.

TRUE

FALSE

Brazil has a **tropical rainforest** biome.

TRUE

FALSE

Madagascar has **savannah** and **tropical rainforest** biomes.

TRUE

FALSE

China has a **tundra** biome.

TRUE

FALSE



Reindeer lichen grows in **tundra** biomes. Does it grow in Mexico, North America?

YES

NO



Bromeliads grow in **tropical rainforest** biomes. Do they grow in Algeria, Africa?

YES

NO



Pine trees grow in **mixed forest** and **taiga** biomes. Do they grow in Norway, Europe?

YES

NO



Cacti grow in **desert** biomes. Do they grow in Thailand, Asia?

YES

NO



Acacia trees grow in **savannah** biomes. Do they grow in Mozambique, Africa?

YES

NO



Pine trees grow in **mixed and deciduous forest** biomes. Do they grow in Japan, Asia?

YES

NO

## news report template

[illegible]



## Finding the duration



- 1 The table shows the start and finish times of some after-school clubs.

Club	Start time	Finish time
Drama	15:30	18:30
Art	15:30	16:30
Rowing	15:45	17:45

- a) How long does Drama club last?

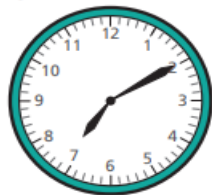
Drama club lasts  hours.

- b) How long does Rowing club last?

Rowing club lasts  minutes.

- 2 The clocks show the start and finish times of some activities. Work out the duration of each.

- a)



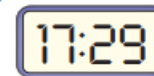
start



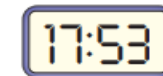
finish

minutes

- b)



start



finish

minutes

- c)



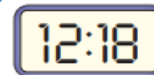
start



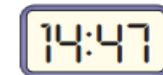
finish

minutes

- d)



start



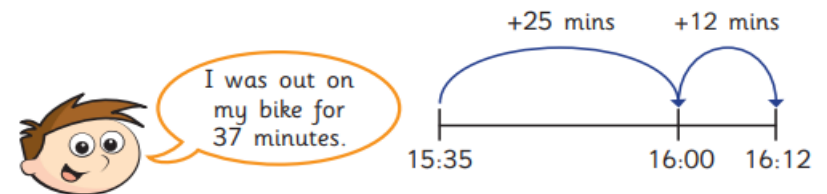
finish

minutes

- 3 Teddy went out on his bike at 15:35 and got home at 16:12

He wants to work out how long he was on his bike.

Here are his workings.



Do you agree with Teddy? \_\_\_\_\_



## Comparing durations



- 1 The timetable shows Huan's morning at school.

09:00 – 10:00	Maths
10:00 – 10:15	Break
10:15 – 10:30	Phonics
10:30 – 11:15	Guided reading
11:15 – 12:00	English

- a) What is Huan's longest lesson in the morning?

How do you know?

- b) What is Huan's shortest lesson in the morning?

How do you know?

- c) Which two lessons are the same length?

How do you know?

- d) How much longer is Huan's Maths lesson than his Phonics lesson?

minutes

- 2 Annie and Amir both went to the park on Saturday.

a)



I got to the park at 12:30 and left at 13:07

How long did Annie spend at the park?

minutes

b)

I got to the park at 14:50 and left at 15:33



How long did Amir spend at the park?

minutes

- c) Who spent longer at the park? \_\_\_\_\_

How much longer did they spend there?

minutes

- 3 Write <, > or = to compare the durations.

a) 09:00 – 10:15  09:10 – 10:15

b) 19:00 – 20:15  18:50 – 20:10

## Start and end times



- 1 Brett gets home from school at this time in the afternoon.



He wants to watch a cartoon at 4:00 pm.

- a) How long does Brett have to wait for the cartoon to start?

minutes

- b) The cartoon lasts for 25 minutes. What time will it finish?  
Give your answer as a 24-hour clock time.

\_\_\_\_\_

- 2 Nijah has football practice at 16:10  
It lasts for 45 minutes.

- a) What time will it finish?  
Give your answer as a 24-hour clock time.

\_\_\_\_\_

- b) It takes Nijah 15 minutes to get home.

What time will she get home?

- 3 The table shows the duration of some lessons at school.

Lesson	Duration
Maths	50 minutes
Phonics	30 minutes
Science	45 minutes
English	55 minutes

- a) Maths starts at 09:15

What time does it finish?

\_\_\_\_\_

- b) Science starts at 13:30

What time does it finish?

\_\_\_\_\_

- c) Phonics finishes at 10:50

What time does it start?

\_\_\_\_\_

- d) English finishes at 15:10

What time does it start?