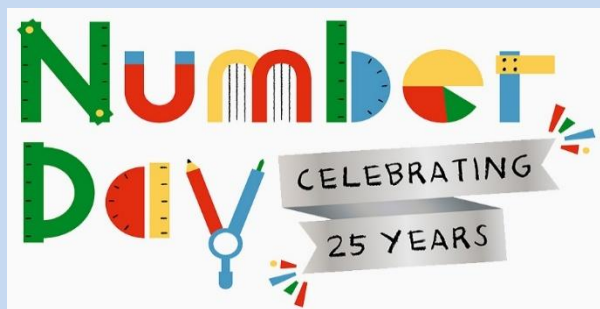


30th January 2026

Dear Parents / Carers,

Upcoming non-uniform day – NSPCC Number Day – Friday 6th February



On the **6th Feb, we will be supporting NSPCC Number Day.** This is a fantastic opportunity for our children to experience " Maths, but not as we know it!"

The theme for the day is "Dress Up For Digits!" We would like to invite the children to **come to school wearing something with numbers on.** They do not need to wear their uniforms, they could wear sports kits, clothes with numbers printed on or numbers added on, numbers in their

hair - numbers anywhere! We will be raising funds for the NSPCC. The NSPCC provides vital services for children such as Childline and the Speak out Stay Safe programme.

On the day there will be a Times Table Rockstars "Battle of the Bands" tournament between our 4 school houses. We look forward to finding out which house is the times table champion of the school!

Deal Foodbank

Northbourne continues to build strong links with the local Deal Foodbank. The pupils recognise this charity as an important part of our local advocacy and they enjoy raising donations at key times of the year, such as Harvest.



- **Class Shopping Lists – Coming next week**

Please look out for an email from school regarding individual items we are asking each class to collect for the Foodbank.

- **Referring for Foodbank vouchers**

The school can also refer people for Foodbank vouchers. We know that anyone can find themselves at crisis point for a number of different reasons. If you feel that yourself, or anybody that you know, would benefit from a referral for Foodbank vouchers, please do speak confidentially to either Mr Reynolds, Mrs Morrison, Mrs Underwood or Mrs Thomas.



On Wednesday this week, Mr Chidwick and Mrs Kent took a team of ambassadors to Frampton Farm in Dover. The pupils spent the morning putting their Forest School skills to work, helping out on the farm, feeding and mucking out the animals.

We were very grateful to Miss Lamb, who used to work at Northbourne, for inviting us to the farm and giving our pupils this opportunity.

INSET days for academic year 2026 – 2027

We have set our INSET days for the next academic year. Please note the following days where the school will be closed to pupils:

- Tuesday 1st September 2026
- Thursday 22nd October 2026
- Friday 23rd October 2026
- Monday 4th January 2027
- Monday 21st June 2027

Please see below for the calendar view of where our INSET days are for the next academic year.

**Northbourne CEP School
Academic Calendar 2026/27**

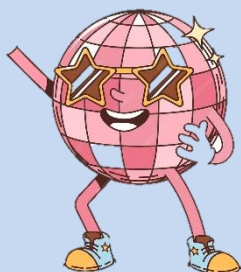
September 2026					October 2026					November 2026					December 2026				
M	T	W	T	F	M	T	W	T	F	M	T	W	T	F	M	T	W	T	F
	1	2	3	4				1	2	2	3	4	5	6		1	2	3	4
7	8	9	10	11	5	6	7	8	9	9	10	11	12	13	7	8	9	10	11
14	15	16	17	18	12	13	14	15	16	16	17	18	19	20	14	15	16	17	18
21	22	23	24	25	19	20	21	22	23	23	24	25	26	27	21	22	23	24	25
28	29	30			26	27	28	29	30	30					28	29	30	31	
January 2027					February 2027					March 2027					April 2027				
M	T	W	T	F	M	T	W	T	F	M	T	W	T	F	M	T	W	T	F
				1	1	2	3	4	5	1	2	3	4	5				1	2
4	5	6	7	8	8	9	10	11	12	8	9	10	11	12	5	6	7	8	9
11	12	13	14	15	15	16	17	18	19	15	16	17	18	19	12	13	14	15	16
18	19	20	21	22	22	23	24	25	26	22	23	24	25	26	19	20	21	22	23
25	26	27	28	29						29	30	31			26	27	28	29	30
May 2027					June 2027					July 2027					Legend				
M	T	W	T	F	M	T	W	T	F	M	T	W	T	F					
3	4	5	6	7		1	2	3	4				1	2		School Day			
10	11	12	13	14	7	8	9	10	11	5	6	7	8	9		School Holiday			
17	18	19	20	21	14	15	16	17	18	12	13	14	15	16		Bank Holiday			
24	25	26	27	28	21	22	23	24	25	19	20	21	22	23		Inset Day			
31					28	29	30			26	27	28	29	30					

Friends of Northbourne – Disco

The Friends of Northbourne will be holding a school disco for the children on Friday 6th Feb in the school hall.

Please book your child's place via the school app.

The disco is open to all year groups to come along and enjoy. Thank you for helping to support the Friends of Northbourne fundraising events.



Whole School Meals – Update to Monday's menu

Please note, Whole School Meals have extended their options on vegetarian Mondays across their menu. The additions each week are:

- Week 1 - Cheese Whirl
- Week 2 - Cheese Pizza
- Week 3 - Mac n Cheese

Please see below:

whole school meals REAL FOOD FOR REAL MENUS		Menu - October 2025 - March 2026		
		Week One 27/10, 17/11, 08/12, 05/01, 26/01, 23/02, 16/03	Week Two 03/11, 24/11, 12/01, 02/02, 02/03, 23/03	Week Three 10/11, 01/12, 19/01, 09/02, 09/03, 30/03
Monday	Option 1	Cheese Whirl & Saute Potatoes	Cheese Pizza	Mac n Cheese
	Option 2	Vegetable Pasta Bake	Mixed Bean Wrap	Tomato Pasta
	served with	Garlic Bread Peas & Baked Beans	Pasta Peas & Sweetcorn	Garlic Dough Balls Mixed Vegetables
	Option 3	Jacket Potato with *Cheese & Beans	Jacket Potato with *Cheese & Beans	Jacket Potato with *Cheese & Beans
	Dessert	Chocolate Krispie Cake Fruit Jelly or Fresh Fruit	Jelly Yoghurt & Fruit Compote Fresh Fruit	Cornflake Crunch Fruit Jelly or Fresh Fruit

Attendance Update

This week's attendance percentages: Week ending Friday 30th January.

Willow
100%

Beech
96%

Maple
90%

Hazel
99%

Oak
94%

**Whole school
cumulative this
year to date
95.8%**



Vision Champions Week ending Friday 30th January

Willow – Isaac
Beech – Silas
Maple – Fred B
Hazel – Ben
Oak – Olivia
Head Girl's Award – Rosie K
Head Boy's Award – Peter
Attendance Ted – Willow
Punctuality Pup – Maple class



Next Week at Northbourne Primary School

Monday 2nd February

Lunch Options: *Cheese Pizza, Mixed Bean Wrap or Jacket Potato*

Forest School: *Beech Class*

PE Lesson: *Every class will have a PE lesson with Coach Kye*

Tuesday 3rd February

Lunch Options: *Chicken Tacos, Sweet Potato & Spinach Dhal or Jacket Potato*

Forest School: *Maple Class*

Cornet Lesson: *Years 5-6, please remember to bring your cornet into school*

Swimming Lessons: *Year 4 Swimming*

Other: *Mini Police Cadets 2pm*

Wednesday 4th February

Lunch Options: *Roast Pork, Veggie Meatloaf or Jacket Potato*

Forest School: *Hazel Class*

Thursday 5th February

Lunch Options: *Beef Bolognese, Veggie Bolognese or Jacket Potato*

Forest School: *Oak Class*

Friday 6th February

Lunch Options: *Fish Bites, Veggie Nuggets or Jacket Potato*

Forest School: *Willow Class*

Lunch Clubs: *Choir & Gardening Club*

4:30pm SCHOOL DISCO