

23rd January 2026

Dear Parents / Carers,

Car Park and Estate Update

Thank you all for your patience over the current state of the school car park. We are all aware of how significant the pot holes are at the moment. I urge you to drive very slowly and carefully when entering the car park, as school cannot be liable for any damage caused to vehicles.

Those of you who have been parents at Northbourne for a number of years will know how difficult it is to manage the car park. The land does not belong to the school, however, we manage it carefully with the agreement of the local land owners. and we are making plans to repair the ground once the weather conditions will allow us to do so.

Please can I also request that parents and children do not venture into the woodland area beyond the back of the car park. This is private land, and whilst we have the land owners authority to use the woodland during the day for additional Forest School space, we do not have the authority to use it outside of these hours for playing, dog walking, etc. Thank you for your support with this.



Whole School Meals – Outstanding balances

If your child is in Years 3 to 6 and you pay for school lunches, please can I ask you to be mindful of any outstanding balances you may have. Whole School Meals routinely check that all meals have been paid for and will contact the school if there are any issues. Please help us by ensuring outstanding balances are cleared.

If you have any issues with clearing a balance for you child then please come and speak to Mr Reynolds confidentially, so that we can help manage the situation with you.

If your child is in Years R, 1 or 2 then your meals are paid for via the Government's "Universal Free School Meals" scheme.

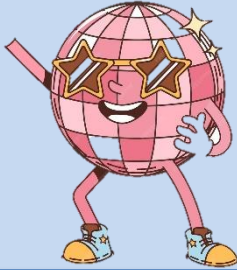


Friends of Northbourne – Disco

The Friends of Northbourne will be holding a school disco for the children on Friday 6th Feb in the school hall.

Please book your child's place via the school app.

The disco is open to all year groups to come along and enjoy. Thank you for helping to support the Friends of Northbourne fundraising events.



Attendance Update

This week's attendance percentages: Week ending Friday 23rd January.

Willow
98%

Beech
98%

Maple
93%

Hazel
100%

Oak
92%

Whole school
cumulative this
year to date
95.9%



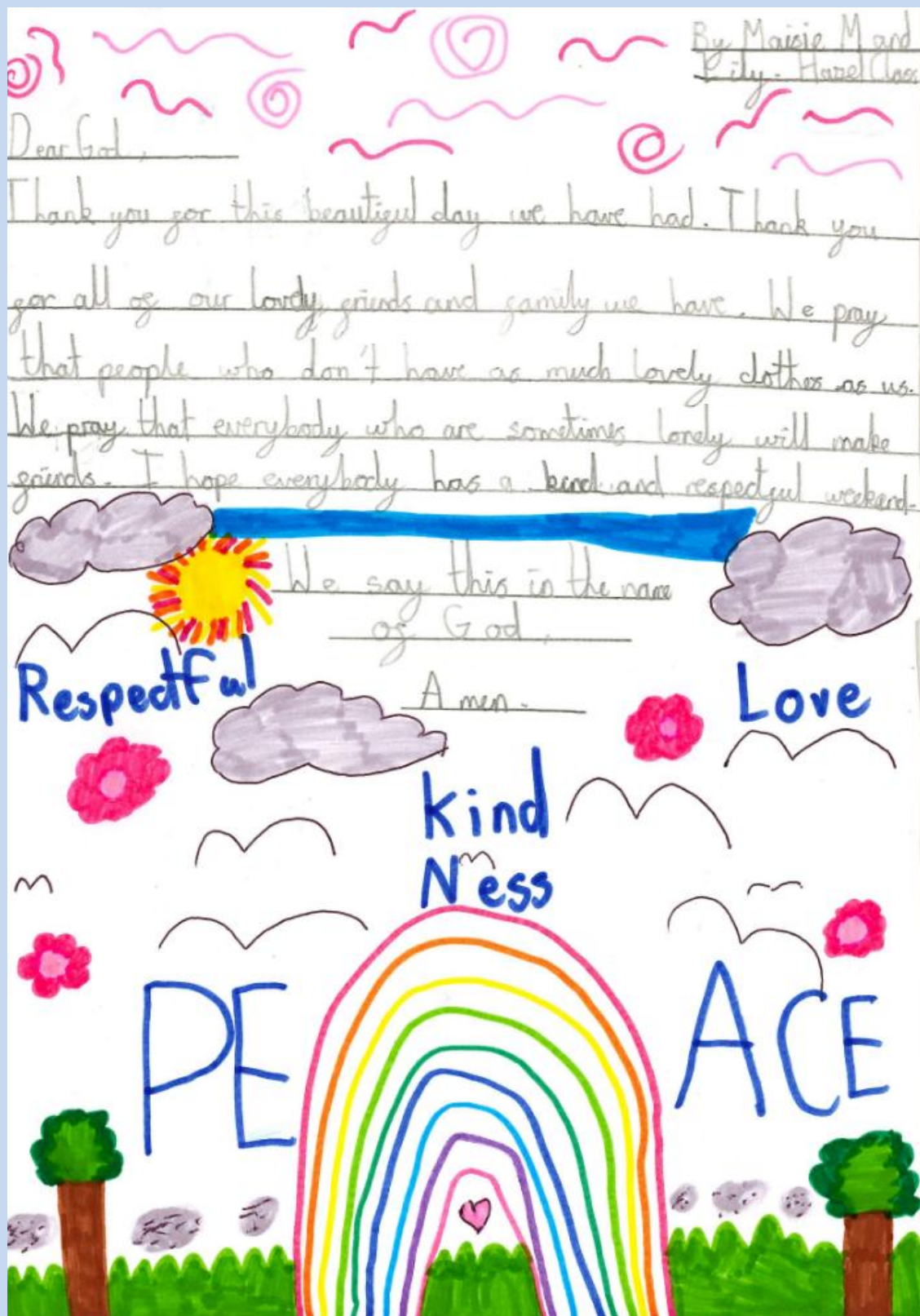
Vision Champions

Week ending Friday 23rd January

Willow – Rose
Beech – Max W
Maple – Esme
Hazel – Alfie
Oak – Vienna
Head Girl's Award – Dylan
Head Boy's Award – Lachlan
Attendance Ted – Hazel class 100%
Punctuality Pup – Maple class



Prayer by Maisie M and Lily – Hazel class



Next Week at Northbourne Primary School

Monday 26th January

Lunch Options: *Vegetable Pasta Bake or Jacket Potato*

Forest School: *Beech Class*

PE Lesson: *Every class will have a PE lesson with Coach Kye*

Tuesday 27th January

Lunch Options: *Beef Tacos Veggie Burrito, or Jacket Potato*

Forest School: *Maple Class*

Cornet Lesson: *Years 5-6, please remember to bring your cornet into school*

Swimming Lessons: *Year 4 Swimming*

Other: *Mini Police Cadets 2pm*

Wednesday 28th January

Lunch Options: *Roast Chicken, Vegetable & Chickpea Tart or Jacket Potato*

Forest School: *Hazel Class*

Thursday 29th January

Lunch Options: *Pork Meatballs, Meatless Meatballs or Jacket Potato*

Forest School: *Oak Class*

Friday 30th January

Lunch Options: *Fish Fingers, Cheese Pizza or Jacket Potato*

Forest School: *Willow Class*

Lunch Clubs: *Choir & Gardening Club*