



NORTHBOURNE CE PRIMARY SCHOOL

COLDHARBOUR LANE, NORTHBOURNE, DEAL, KENT. CT14 0LP TEL: 01304 611376
www.northbourne-cep.kent.sch.uk secretary@northbourne-cep.kent.sch.uk

"if you have faith as small as a mustard seed...nothing will be impossible."
(Matthew: 17 v20)

HEADTEACHER: MR M. REYNOLDS

SENCO: MRS K. MORRISON

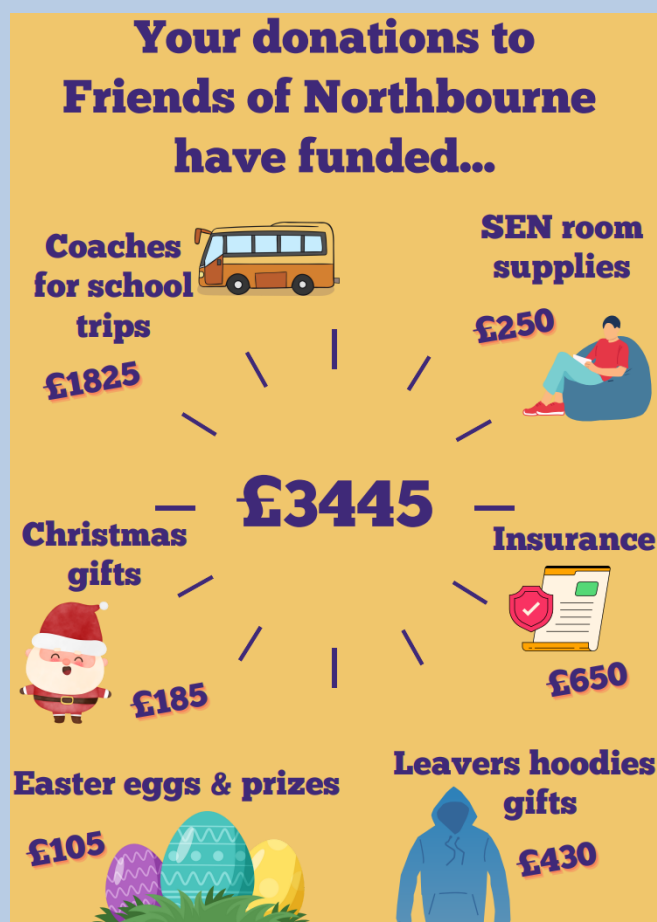
CHAIR OF GOVERNORS: MRS C. WINSLADE

JOINT VICE CHAIR OF GOVERNORS: MR B. SEMPLE & MR C. THOMPSON

Friday 14th July 2023

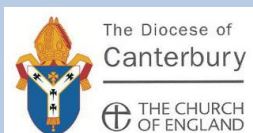
Dear Parents / Carers,

Friends of Northbourne – end of year update



Thank you to everybody for supporting the Friends of Northbourne across this year. Your donations and engagement with school events have a significant impact on resources and opportunities for the pupils at Northbourne!

And thank you to all of the Friends of Northbourne volunteers for the hard work and organisation that goes into everything you do for the school. It is very much appreciated. Thank you!



Maple Class at Samphire Hoe!

Maple Class had a fantastic time at Samphire Hoe this week. They learnt about the history of Samphire Hoe and then carried out a weather survey using thermometers, anemometers and compasses. The pupils then hunted for mini-beasts in the wild grass and created a Maple Class mini-beast zoo! Finally they went fossil hunting and made some brilliant discoveries. They even managed to find a sharks tooth!



Well done to Maple Class for representing the school so well on their trip. It has been wonderful to hear about all the learning and knowledge you gained at Samphire Hoe!



Learning enrichment activities next week

We might be heading into the final week of the year, but the learning and enrichment opportunities for the children aren't stopping yet!

On Monday the whole school will be taking part in a STEM day (Science Technology Engineering and Maths). The focus for the day is "Building Our Future!" The children from Reception class through to Year 6 will be tackling different problems linked to the homes we live in. They will have the opportunity to think as architects, engineers, environmentalists, planners and builders. We can't wait to see how the children tackle their STEM challenges next week.

On Wednesday our pupils in Years R, 4 and 5 will be heading to Wingham Wildlife Park to finish off their term's Geography and Science learning. We look forward to hearing all about their learning next week.

Drop off point safety

For those of you who use the Drop Off point in the morning or afternoon, please can I ask you to be careful and safe with your children whilst waiting in the queue. It has been brought to my attention that children have been climbing out of their car before reaching the gate, or have been sitting or standing in car door windows. Please help us to keep the Drop Off point operating safely. Thank you.

End of term arrangements – Friday 21st July - collect from 1pm



On Friday 21st July you may choose to collect your child early, starting from 1.00pm, should you wish. If you are collecting early, please line up as normal in the school driveway and your child will be collected from their classroom and brought out to you via the hall doors. You can collect anytime from 1.00pm. School will remain open until 3.00pm as usual for those who cannot, or do not want to, be collected early. The KCC minibus will run at the normal time.

End of year reports

Next week your child will bring home their end of year report. These reports will provide you with a summary of their learning this year along with key targets for them in Maths and English. You will also receive an attendance report for the year and a Forest School summary for their class.

Summer Reading Challenge



The Reading Agency and libraries are excited to introduce this year's Summer Reading Challenge, **Ready, Set, Read!**

The Summer Reading Challenge 2023 is a celebration of reading, sport, games and play.

Children can [visit the library](#) to take part, or visit the [Summer Reading Challenge website](#) to take part digitally.

The Summer Reading Challenge runs in Kent from Saturday 8 July to Saturday 9 September and aims to keep children reading over the summer.

The challenge is to read 6 books, eBooks, eAudio or eMagazines. All children receive a certificate and a medal once they've completed their challenge.

First Aid – please let us know any updates

Any medication held at school for your child must be collected by the last day of term.

Last week we emailed out a medical records update form, please let Mrs Berridge know if there are any changes to your child's medical records (e.g. changes to allergies, hayfever, asthma, etc)

Outstanding payments with Whole School Meals

If you have any outstanding payment with Whole School Meals please can we ask you to settle them before the end of the academic year. Thank you.

Attendance Update

This week's attendance percentages: Week beginning 10.07.23.

Willow
100%

Beech
98%

Maple
99%

Hazel
95%

Oak
96%

**Whole school
cumulative this
year
95.2%**

↑ 0.06% from last
week

Rose Hodder Hazel class^{2nd} July 2023

Dear god

I am thankful for my
Family and Friends.
and all the nature around
us. Amen

